

Hello teachers,

Many changes have been happening over here at the TELUS World of Science - Edmonton, and I'm thrilled to be a part of them. I've very recently transitioned into the role of Manager of School Programs and I am both honoured and excited to embark on this new journey. During my seven years as a School Programs Specialist at TWOSE, I've been part of a wonderful team of dedicated educators that has developed and delivered great science education to your students.



Maura Armstrong, Manager, School Programs

A Little About Me:

1. My area of expertise is museum education; I'm currently studying to complete my Master's in Museum Education at UBC.
2. Something not a lot of people know about me:
I have written a novel. (I'm currently working on a publishing deal!)
3. I love teaching because there is nothing like the way a student's eyes light up when I'm able to help them understand something for the first time.

I'm looking forward to my new role as Manager of School Programs at TWOSE. I have an incredible team of School Programs Specialist working with me and we are excited to provide you and your students with the best field trip experiences possible.

Please feel free to reach out to me with any questions you might have.

Sincerely,

Maura Armstrong
Manager, School Programs
TELUS World of Science - Edmonton

Sherlock Holmes Educator Preview

Tuesday, April 5
4:00 p.m. to 8:00 p.m.

Don't miss this FREE educator preview!

March 2016 Eureka!
Newsletter for Educators

Upcoming Events

March

The International Exhibit of
Sherlock Holmes

Opening March 25



Come preview [The International Exhibition of Sherlock Holmes](#) with our staff to discover the educational value for your students.

Don't miss the opportunity to give your students an authentic learning experience like no other: reserve your spot before April 5, 2016.

To reserve your spot for the free educator preview, call 780-451-3344 or email bookings@twose.ca

The International Exhibition of Sherlock Holmes is presented locally by Insight Medical Imaging and supported locally by The Sherlock Holmes Pub.

Yuri's Day!

Tuesday, April 12



Celebrate the 55th anniversary of the first human in space!

Russian cosmonaut, Yuri Gagarin, was the first human in space and this year marks 55 years since his astronomical voyage! Join us on Tuesday, April 12, to learn more about his incredible trip and to find out what's in store for the future of space exploration.

Students will participate in a variety of activities, including:

- Interactive space themed science demonstration on our Syncrude Science Stage.
- Zero gravity training in our Multi-Axis Trainer.
- Planetarium show "Dawn of the Space Age" in our full dome Margaret Zeidler Star Theatre.
- Astrolabe activity in our full dome theatre.
- Explore the universe through a telescope in our Observatory (Weather permitting)

Suitable for Grades 6 & 9.

Summer Camps

July 4 - August 26

Registration now open

April

Special Programs

Inside The International Exhibit of Sherlock Holmes

Elementary!

Grade 6 - 90 minutes

Solve a mystery using science!

Forensic Engineers

Grades 6 and Up - 60 minutes

Was the disaster caused by an accident or did someone make it happen? Learn how to spot the difference!

Programs \$4.00 per student

Entrance to Sherlock exhibit \$9.00 per student. Includes Building Admission.

Real People, Real Science Event:

Yuri's Day!

Tuesday, April 12

Grades 6 and 9

9:30 a.m. - 11:30 a.m. OR;

12:00 p.m. - 2:00 p.m.

Join us as we celebrate the anniversary of the first human in space.

Science School at TWOSE 2016-2017

TWOSE is proud to be a part of the Inquiring Minds site-based school programs in Edmonton

We are currently looking for teachers with a sense of adventure to pioneer this new program with us!

Playing in IMAX

Times: 9:30 a.m. to 11:30 a.m. OR 12:00 p.m. to 2:00 p.m.

Cost is \$8.00 per student.

Includes 2 hours to participate in Yuri's Day events, as well as Science Centre Admission.

Call our Bookings Office at 780.451.3344 or via email at bookings@twose.ca to book!

The International Exhibition of Sherlock Holmes

Now Booking Field Trips beginning March 25, through to the end of the 2016 school year!

Take students on an adventure of deduction in a brand new story for the cannon of Sherlock Holmes. The primary educational goals of the exhibition are **literature, history, science, technology and psychology**.

Exhibition entrance is \$9.00 per student and \$4.00 per teachers and required chaperons. Includes Building Admssion. Added programs are \$4.00 per student.

Book today by calling the Bookings Office at 780.451.3344 or via email at bookings@twose.ca

The International Exhibition of Sherlock Holmes is presented locally by Insight Medical Imaging and supported locally by The Sherlock Holmes Pub.

Special Programs in Connection to The International Exhibition of Sherlock Holmes

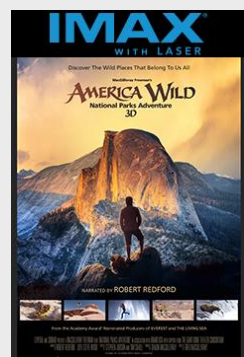
Elementary! (Grade 6, 90 minutes)

Can your class solve a 19th century whodunit? Our instructors will teach your students forensic technique and guide them through the exhibition as they work to solve a case. This program is similar to our popular Magnolia Tree Mystery, and will be offered throughout the exhibition run.

Curriculum connections: Grade 6 - Evidence & Investigation

Forensic Engineers (Grade 6 and up, 60 minutes)

Things break -- sometimes by accident and sometimes on purpose. We're calling on your students to become forensic engineers' to see if they can figure out the difference! This program will be hosted in TWOSE's newest permanent gallery, The Science Garage, where



America Wild 3D

Soar over red rock canyons, hurtle down steep mountain peaks and explore other other-worldly realms found within America's most legendary outdoor places-national parks like Yosemite, Yellowstone, the Grand Canyon, Redwood National Park and the Everglades - without ever having to leave Canada.

[Click here for information on all IMAX films including related programs and curriculum connections.](#)

In The Margaret Zeidler Theatre



[Click here for information on all planetarium shows including related programs and curriculum connections. Add a Planetarium Show to your Field Trip for \\$2.00 per student.](#)

Educator Benefits

Alberta Teacher Association members save 10% in the Main Gift Shop all year! See Edmonton's best selection of unique science and educational gifts. Present your ATA

students will investigate structures, projectiles and circuitry to uncover any nefarious intent.

Curriculum connections:

Grade 6 - Evidence & Investigation

Grade 7 - Structures & Forces

Grade 8 - Mechanical Systems

Each program is \$4.00 per student. Entrance into *The International Exhibition of Sherlock Holmes* is \$9.00 per student, includes Building Admission.

Call our Bookings Office at 780.451.3344 or via email at bookings@twose.ca to book!

Science School at TWOSE 2016-2017

TWOSE is proud to be a part of the Inquiring Minds site-based school programs in Edmonton

We are currently looking for teachers with a sense of adventure to pioneer this new program with us! This unique program will be piloted with four elementary or middle school classes and their teacher, each visiting TWOSE for a duration of one week.

Science School is designed to inspire students to explore STEM disciplines (Science, Technology, Engineering, and Math) through collaborative design projects, guided explorations of the natural environment, experimentation with engineering and technology, and learning through play.

To learn more information about the Inquiring Minds site-based school programs in Edmonton visit the Inquiring Minds website.

card in the Main Gift Shop.

Your ATA card also grants you 25% off a TELUS World of Science - Edmonton Membership!

TWOSE Members receives free unlimited admission, 50% off IMAX films, special pricing on feature exhibitions, great discounts and free access to over 350 other science centres and museums throughout the world.

[Click here for more information.](#)
[ATA member discount on TWOSE](#)
[Members valid during the school year.](#)

Hours of Operations

Sunday - Thursday
9:00 a.m. - 5:00 p.m.

Friday & Saturday
9:00 a.m. - 8:00 p.m.

[Check website for IMAX Showtimes.](#)

Social Scene

Like us on Facebook 

Follow us on  **twitter**

 **Follow Us on** 