

**Book Your Field Trip today by calling
780.451.3344 or by [clicking here!](#)**

Beyond Rubik's Cube

Now Open

Through highly interactive physical and digital challenges, students will explore how the Rubik's Cube emerged from a workshop in Communist-era Hungary to become a worldwide phenomenon, fostering creativity across the fields of science, technology, engineering, robotics, the visual arts, music, film, architecture, and mathematics.



The exhibition features three distinctive zones: The Invent Zone where students are invited to jump right into the complex and compelling world of puzzle toys; The Play Zone centred around hands-on exploration; and The Inspire Zone which showcases the Cube's vast artistic and technological influence.

Visit the website for curriculum connections and information on STEAM Cube a special program taught inside the exhibition!

Book Your Field Trip Today!

Beyond Rubik's Cube is included with Building Admission.

To book contact the Bookings Office at 780.451.3344 or via email at bookings@twose.ca.

Beyond Rubik's Cube is presented by The Association of Professional Engineers and Geoscientists of Alberta and the Gold Sponsor is Dialog.

January 2016 Eureka!
Newsletter for Educators

Upcoming Events

January

Beyond Rubik's Cube

Open Daily

Special Program

Inside Beyond Rubik's Cube

STEAM Cube

60 minutes

Grades 3-6

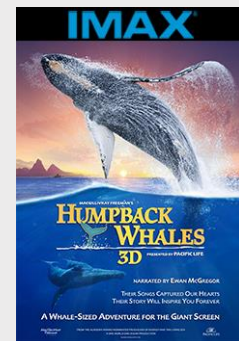
\$4.00 per student

(In addition to Building Admission)

Enhance your experience in *Beyond Rubik's Cube* with this hands-on program! Your students will have the opportunity to build and experiment with a variety of shapes, patterns and other math concepts.

This station-based program lasts 60 minutes, and involves 15 minutes of focused gallery time where newly learned concepts will be applied.

Playing in IMAX



Humpback Whales 3D

Set in the spectacular waters of Alaska, Hawaii and the remote islands of Tonga, this ocean adventure offers audiences an up-close look at how these whales

The Science Garage

Now Open

The Science Garage invites students of all ages to get their hands and minds busy with science as they create, compete, tinker, test, and build their way through a wide variety of activities and displays. The gallery features several unique elements including a magnetic roller coaster wall, kinetic dance floor, vertical wind tunnels and freedom climber walls.



The Science Garage also features a Maker's Space stocked with a variety of random materials and led by our science team who present challenges and tasks for all ages. Put your imagination to the ultimate test as you use the supplied materials to complete a specific challenge or build something entirely new.

Visit the [website](#) for curriculum connections. *The Science Garage* is included with Building Admission.

The International Exhibition of Sherlock Holmes

Opening March 25, 2016

The International Exhibition of Sherlock Holmes brings Sherlock Holmes to life as never before as you step into Conan Doyle's Victorian London and work side-by-side with his legendary detective.

Take students on an adventure of deduction in a brand new story for the canon of Sherlock Holmes. Join the world famous detective on a pursuit to crack a unique crime armed with the powers of deduction and the most cutting-edge scientific techniques. Then surpass the infallible Holmes by joining today's real world forensic investigators in solving true mysteries.



Visit the [website](#) for a full list of curriculum connections including connections for Grades 5-12 and to download the exhibition's Educator's Guide.

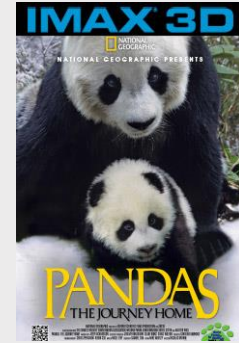
Field Trips

Exhibition entrance is \$9.00 per student (includes full Building Admission).

Book today by calling the Bookings Office at 780.451.3344 or via email at bookings@twose.ca.

Special Programs in Connection to The International Exhibition of

communicate, sing, feed, play and take care of their young.



Pandas: The Journey Home

[Click here](#) for information on all IMAX films including related programs and curriculum connections.

In The Margaret Zeidler Theatre



[Click here](#) for information on all planetarium shows including related programs and curriculum connections. Add a Planetarium Show to your Field Trip for \$2.00 per student.

Educator Benefits

Alberta Teacher Association members save 10% in the Main Gift Shop all year! See Edmonton's best

Sherlock Holmes

Elementary! (Grade 6, 90 minutes)

Can your class solve a 19th century whodunit? To enhance your students' experience of *The International Sherlock Holmes Exhibition*, our instructors will teach them forensic technique and guide them through the gallery as they work to solve the case. This program is similar to our popular Magnolia Tree Mystery, and will be offered throughout the exhibition run.

Curriculum connections: Grade 6 - Evidence and Investigation

Forensic Engineers (Grade 6 and up, 60 minutes)

Things break; sometimes by accident, and sometimes on purpose. We're calling on your forensic engineer students to see if they can figure out the difference! Come to our brand new *Science Garage* to investigate structures, projectiles, and circuitry to uncover any nefarious intent.

Curriculum connections:
Grade 6 - Evidence and Investigation
Grade 7 - Structures and Forces
Grade 8 - Mechanical Systems

Bookings

Each program is \$4.00 per student. Entrance into *The International Exhibition of Sherlock Holmes* is \$9.00 per student.

Book today by calling the Bookings Office at 780.451.3344 or via email at bookings@twose.ca

Educational Programs

TELUS World of Science - Edmonton provides a fun and unique setting for teachers and students, where science principles come to life.

TWOSE's programs and activities complement the Alberta Education Curriculum so your students can apply the memorable learning experiences they gain with TWOSE's Instructors to the related projects in your classroom.



Visit the website for the full list of programs available to book!

selection of unique science and educational gifts. Present your ATA card in the Main Gift Shop.

Your ATA card also grants you 25% off a TELUS World of Science - Edmonton Membership!

TWOSE Members receives free unlimited admission, 50% off IMAX films, special pricing on feature exhibitions, great discounts and free access to over 350 other science centres and museums throughout the world.

[Click here](#) for more information. ATA member discount on TWOSE Members valid during the school year.

Hours of Operations

Sunday - Thursday
9:00 a.m. - 5:00 p.m.

Friday & Saturday
9:00 a.m. - 8:00 p.m.

[Check website](#) for IMAX Showtimes.

Social Scene

[Like us on Facebook](#) 

[Follow us on twitter](#)

